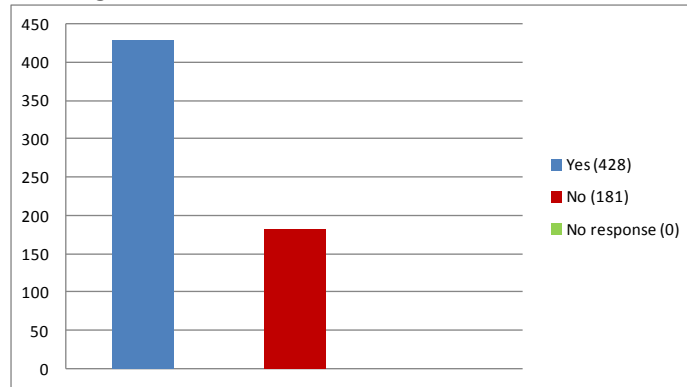


Results of the study of FESM NCU Toruń graduates (2016)

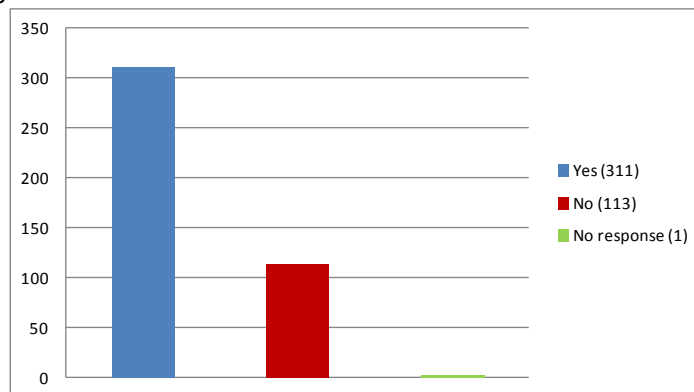
1. Have you worked after graduation from the Faculty of Economic Sciences and Management of Nicolaus Copernicus University in Toruń (whichever studies, first or subsequent)?

Note: The work performed after graduation could have been started during the studies at FESM NCU in Toruń or at any time after graduation.



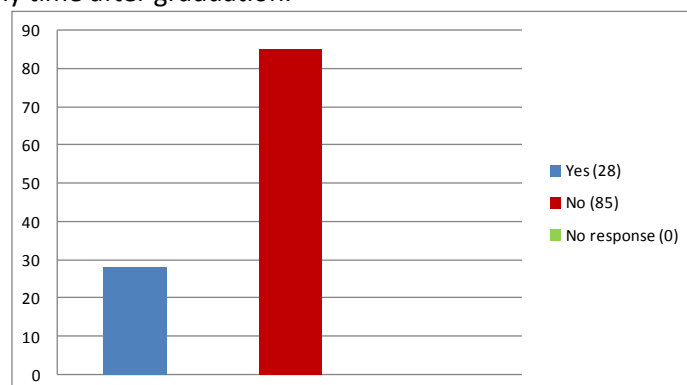
2. Was the first job performed by you after completing your studies at FESM NCU in Toruń consistent with your education at the Faculty?

The question concerns the first work done after completing any studies at FESM NCU in Toruń (first or subsequent). This work could have been undertaken before graduating from FESM NCU in Toruń or at any time after graduation.

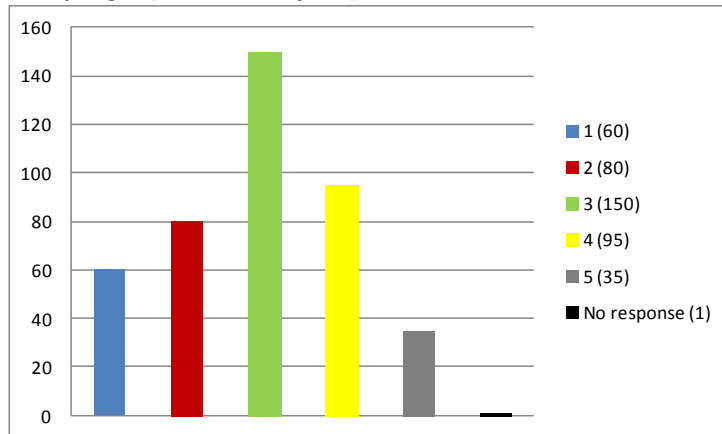


3. Was the first job done by you after completing your studies at FESM NCU in Toruń consistent with your other education obtained?

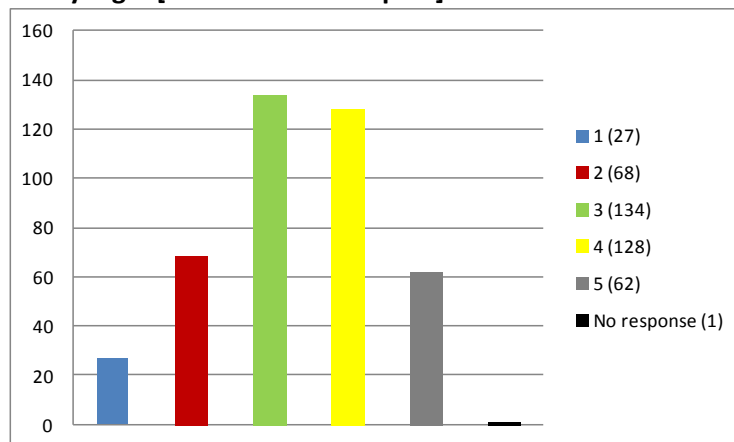
The question concerns the first work done after completing any programme of studies at FESM NCU in Toruń (first or subsequent). This work could have been undertaken prior to graduating from FESM NCU in Toruń or at any time after graduation.



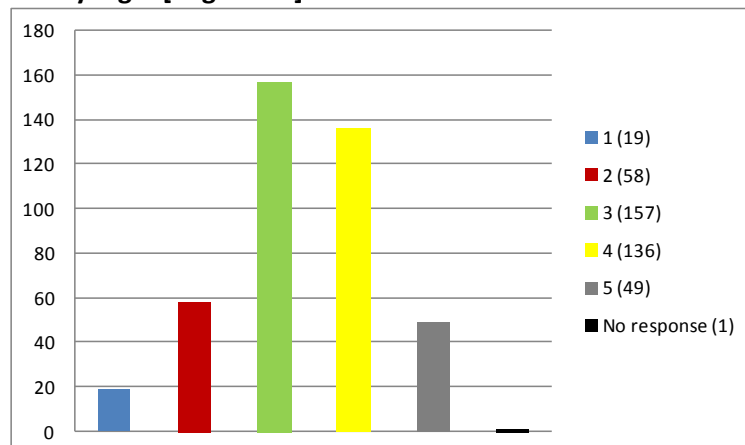
4. Please, assess your satisfaction with your first job done after completing any studies at FESM NCU in Toruń (the same work referred to in the previous question): 1 - very low, 2 - low, 3 - medium, 4 - high, 5 - very high. [Material aspect]



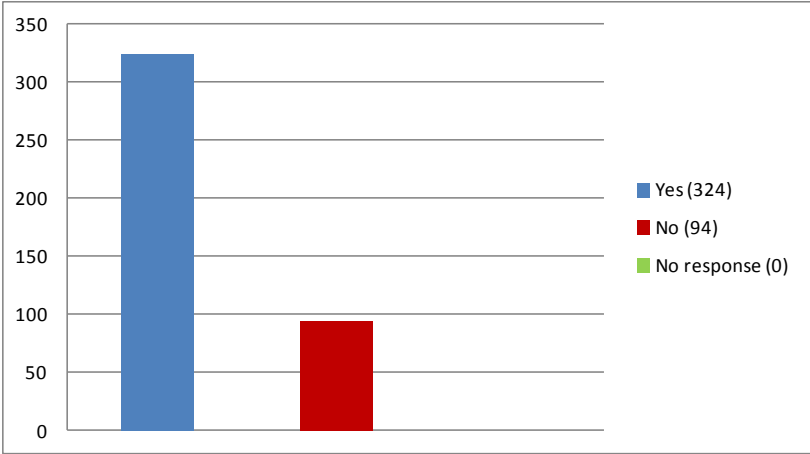
5. Please, assess your satisfaction with your first job done after completing any studies at FESM NCU in Toruń (the same work referred to in the previous question): 1 - very low, 2 - low, 3 - medium, 4 - high, 5 - very high. [Self-realization aspect]



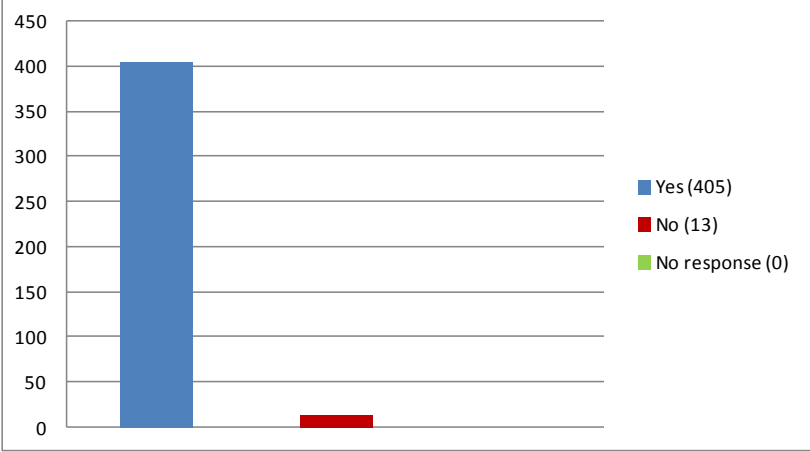
6. Please, assess your satisfaction with your first job done after completing any studies at FESM NCU in Toruń (the same work referred to in the previous question): 1 - very low, 2 - low, 3 - medium, 4 - high, 5 - very high. [In general]



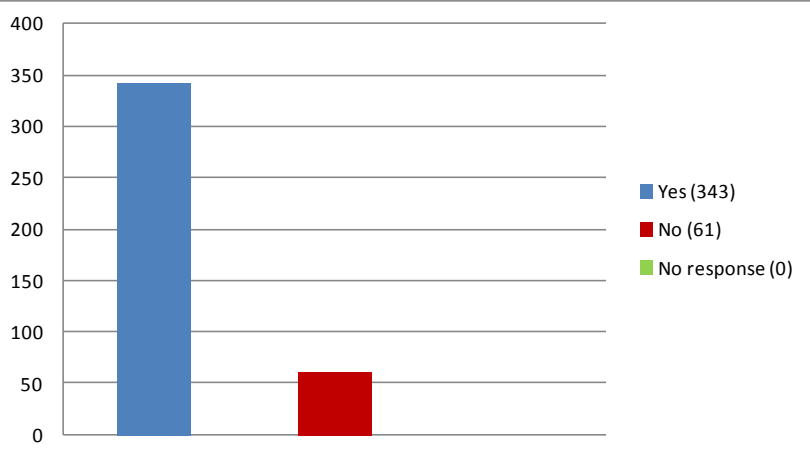
7. Have you been promoted during the last three years? Promotion is to be understood here as obtaining a raise in a position that has been occupied so far, or being promoted to a higher position, or being promoted to a higher position with a wider scope of duties, or being promoted to a higher position with greater responsibility.



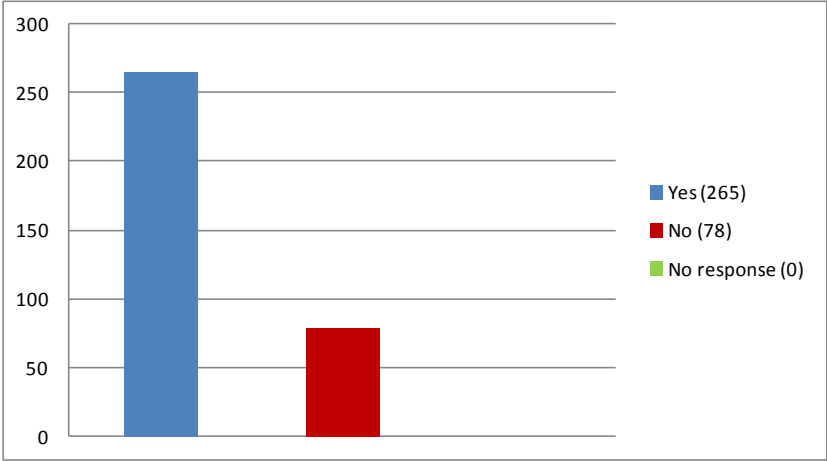
8. Are you employed at present?



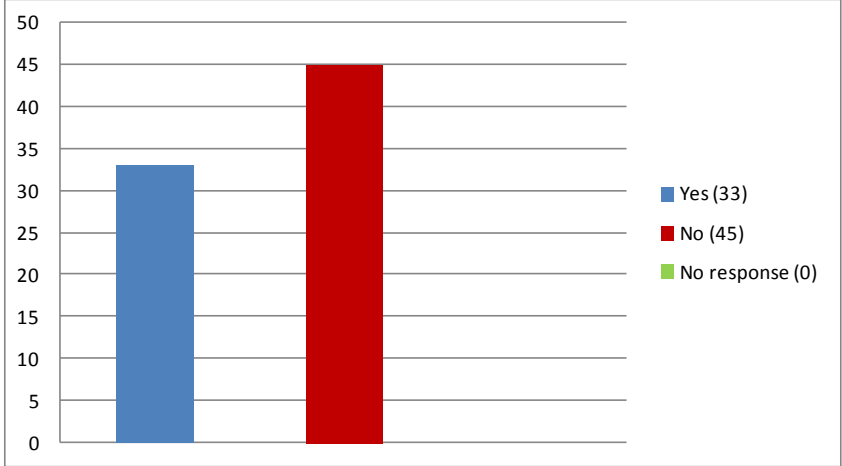
9. Is your current job different (e.g., in terms of place, position, salary, scope of duties or responsibility) from your first job performed after graduating from FESM NCU in Toruń ?



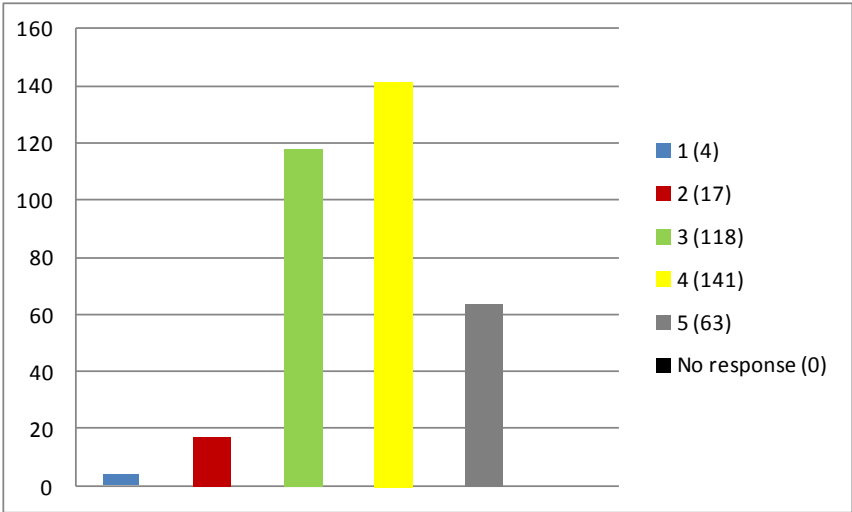
10. Is your current job in line with the education you have gained at FESM NCU in Toruń ?



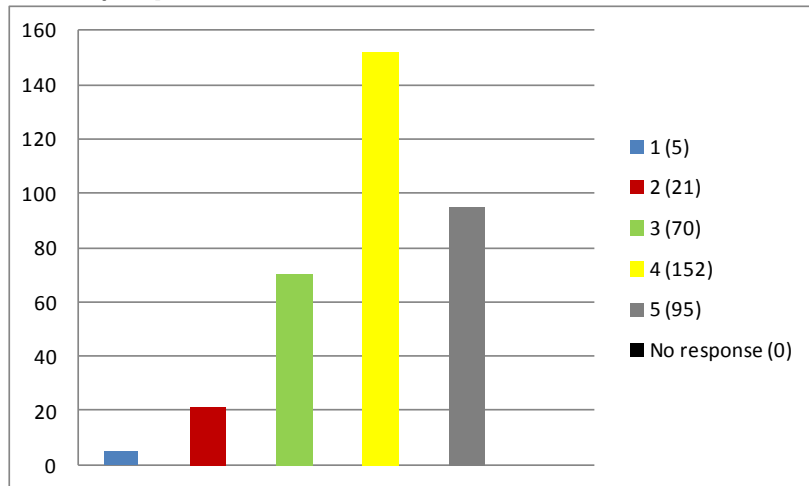
11. Is your current job in line with your other education?



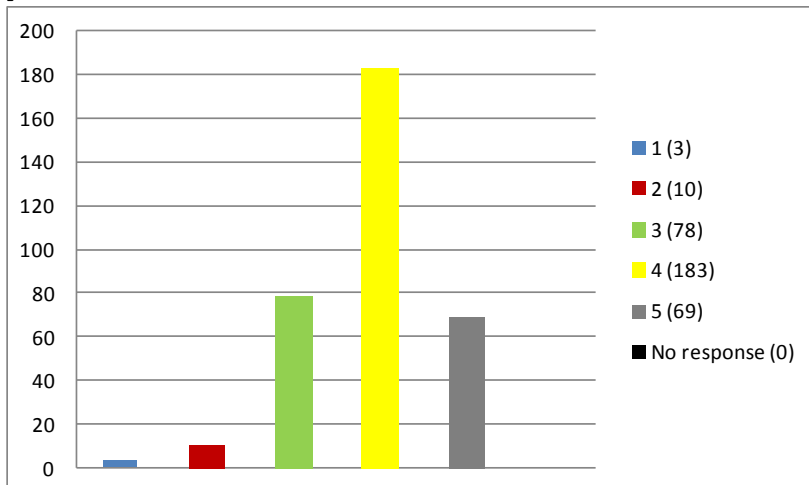
12. Please, assess your current job satisfaction: 1 - very low, 2 - low, 3 - medium, 4 - high, 5 - very high. [Material aspect]



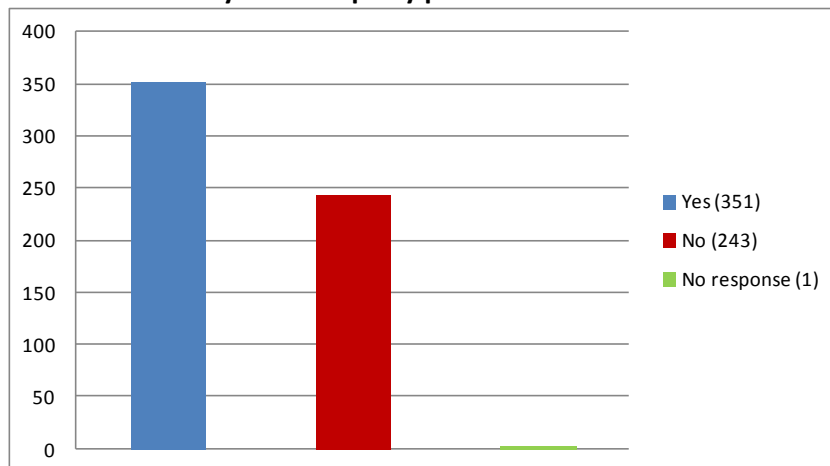
13. Please, assess your current job satisfaction: 1 - very low, 2 - low, 3 - medium, 4 - high, 5 - very high. [Self-realization aspect]



14. Please, assess your current job satisfaction: 1 - very low, 2 - low, 3 - medium, 4 - high, 5 - very high. [In general]



15. Have you passed any examinations or have you obtained any required/useful certificates on any of your positions or necessary to take up any position?



16. Did the knowledge gained during your studies at FESM NCU in Toruń make it easier for you to pass the exam or obtain a certificate required/useful for any position you hold or necessary to take up a position?

